

Crownette Mod

:RDS JUMPSUIT



Protesting the fashion industry and its ills, the artists of Rational Dress Society (RDS) emptied their closets and vowed to wear JUMPSUIT forevermore, inviting others to join the protest. They created a “radically inclusive” sewing pattern for JUMPSUIT available in 330 sizes and free to download from their website (jumpsu.it). Stylish and authentic, RDS JUMPSUIT has staying power against the becoming states of identity and culture, but the project’s true brilliance is in the dramatic suggestion to discard one’s entire fashion closet. This exercise literally materializes an empty space where critical inquiry and joyful play can enter and build alternatives. What if we decided that RDS JUMPSUIT should be the foundation pattern for any new fashion production moving forward? Imagine all the ways this could potentially play out! Using RDS JUMPSUIT as a foundation, we can share ideas via the language of pattern-making to make ideas accessible to all bodies and possibly change the relationship between consumer and producer to become a relationship with more intimacy, consent and care between humans. At least until the algorithms catch up with us! :)

Clownette Mod uses RDS JUMPSUIT as a foundation to recreate the Friend jumpsuit (fashionclownette.com/friend-pattern). Start by downloading your size on the RDS website (fitted or unfitted) and follow the modification diagrams to arrive at the Friend jumpsuit. DIY or find someone in your community to produce it for you!


fashionclownette.com



discard
paper




add
paper



cut


join


notch


blend

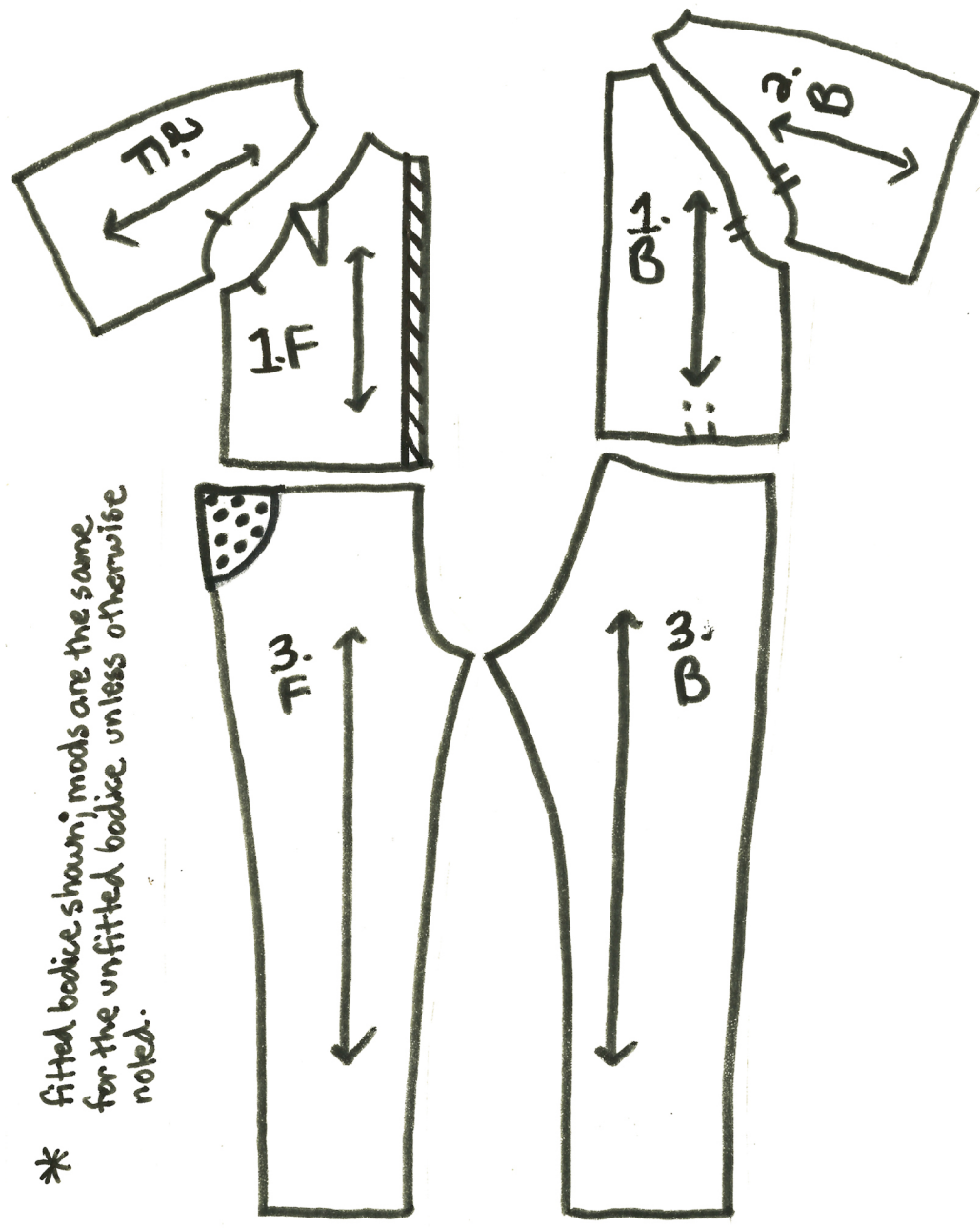

overlap
seam
allowance


trace/draw

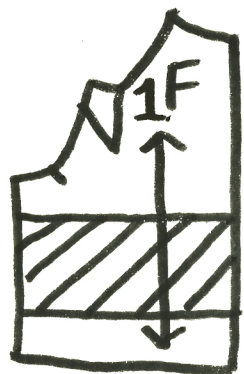
diagrams
not to scale

- 1. Bodice *
- 2. Sleeve
- 3. Pant

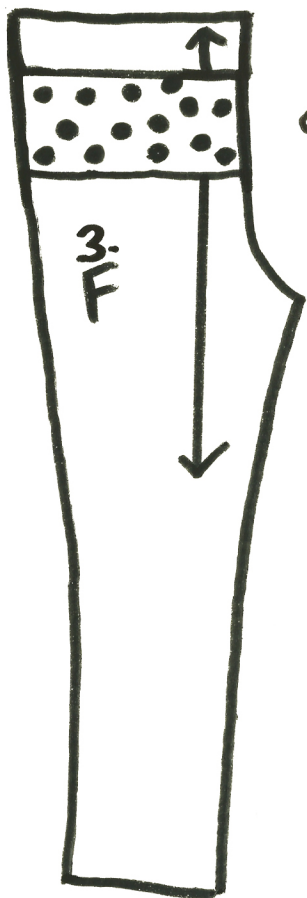
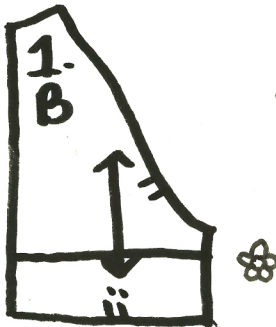
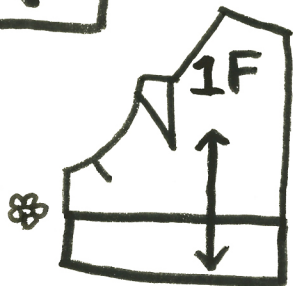
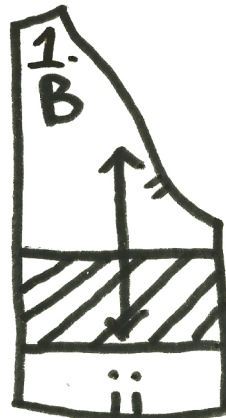
F = Front
B = Back



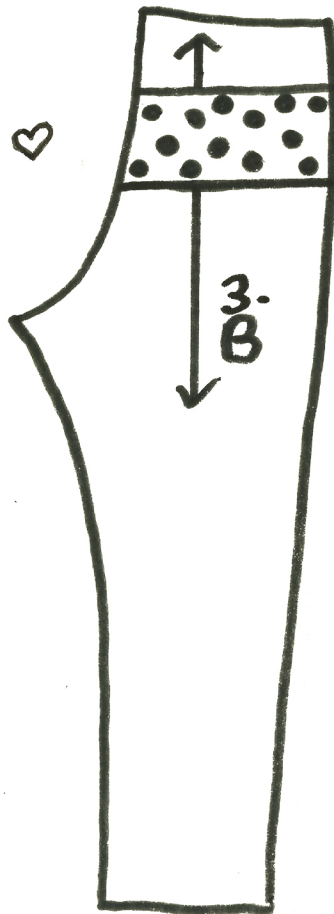
* fitted bodice shown; mods are the same for the unfitted bodice unless otherwise noted.



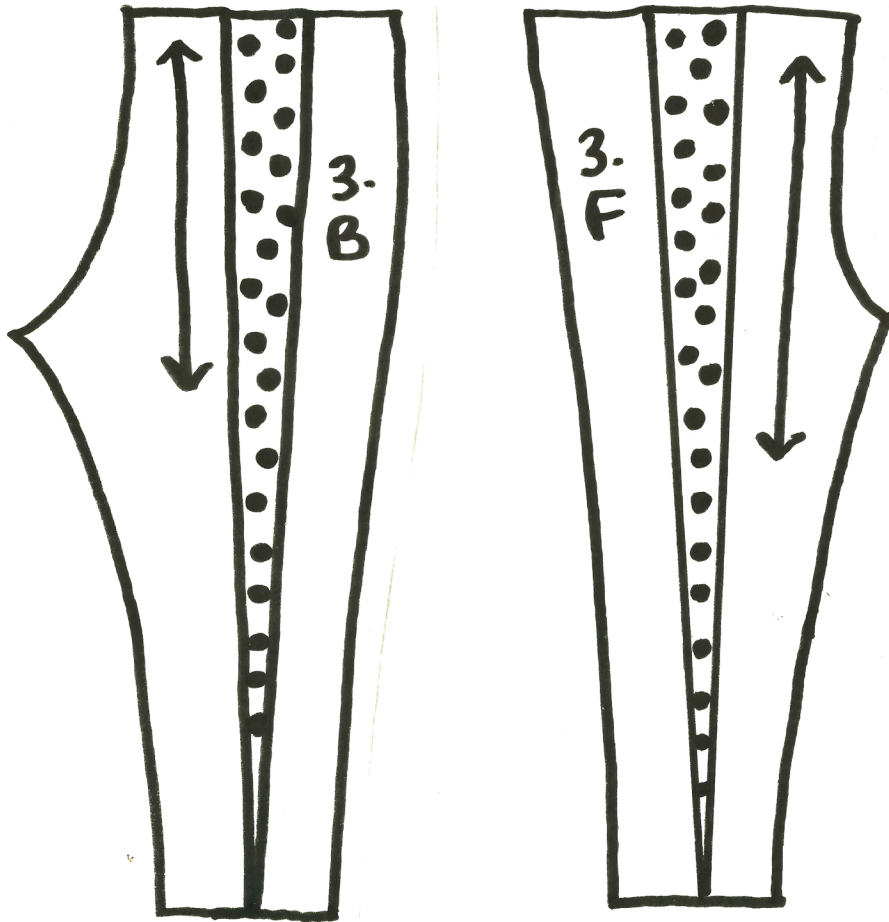
@ 4"

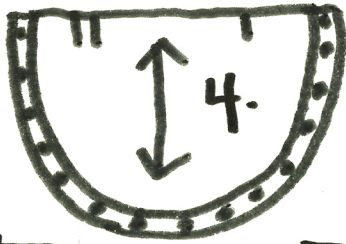


@ 4"+

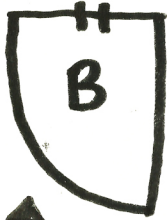


@ 2" +

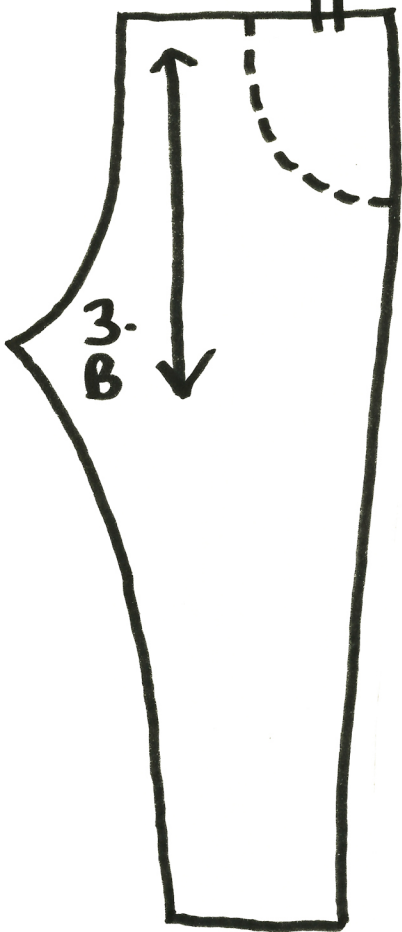




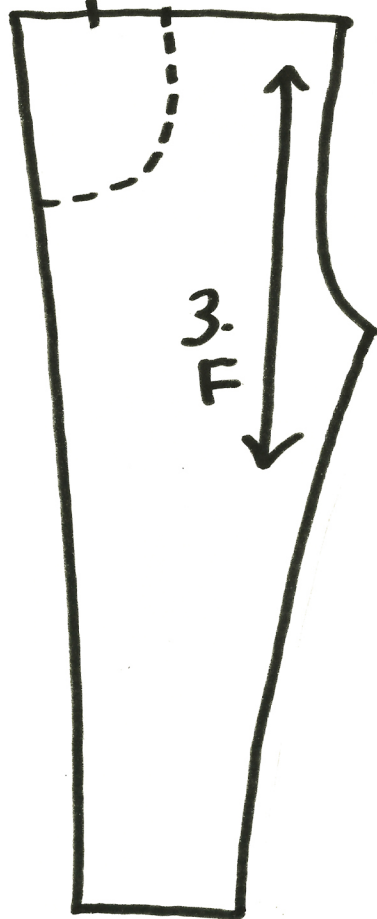
4. Pocket Bag

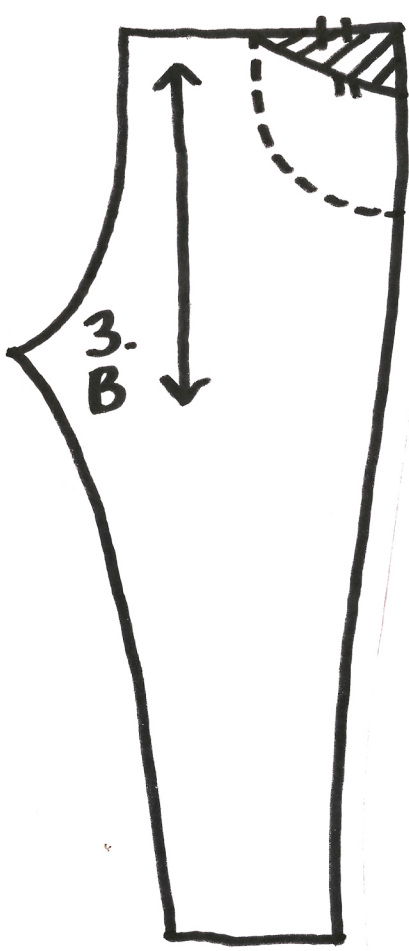


@6"



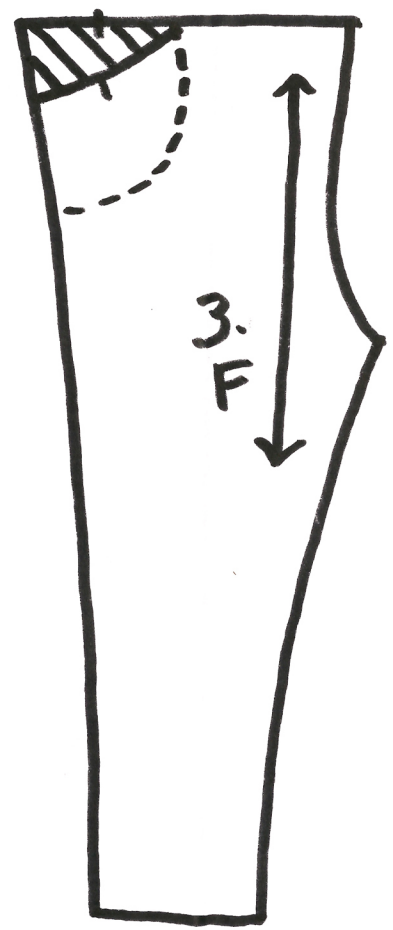
@10"



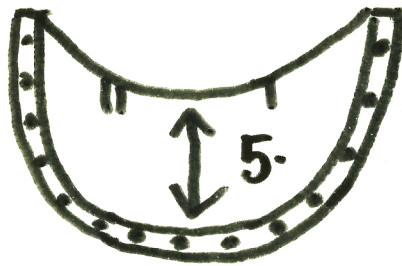


3.
B

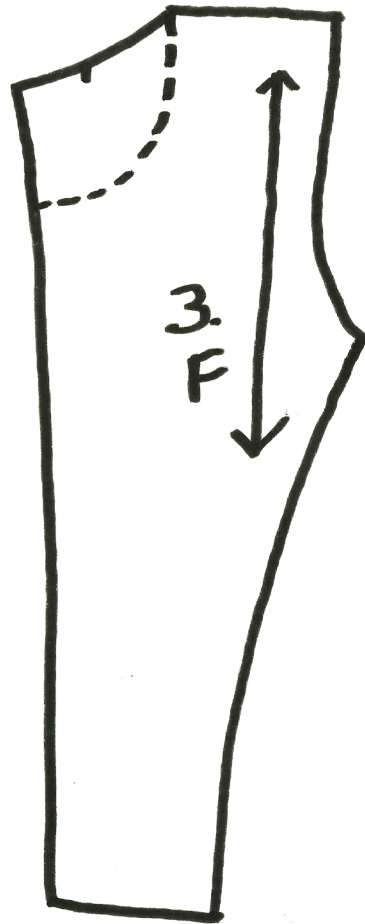
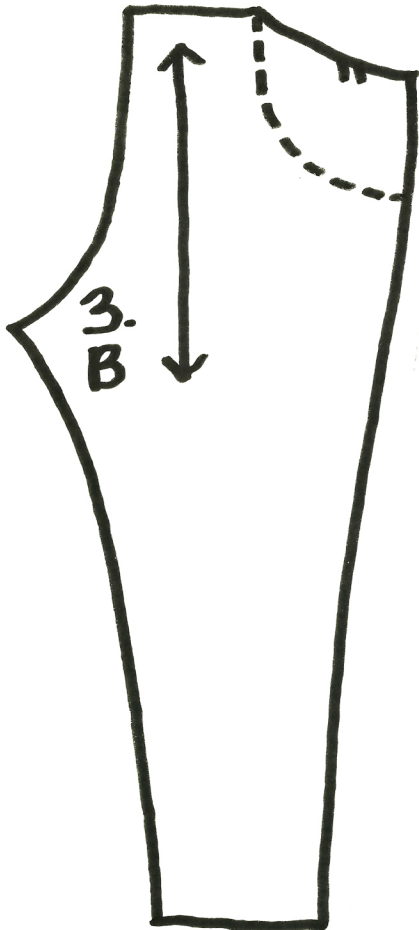
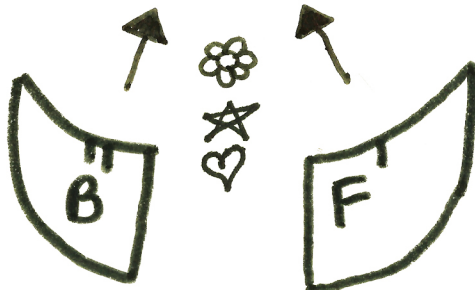
@ 2.5"

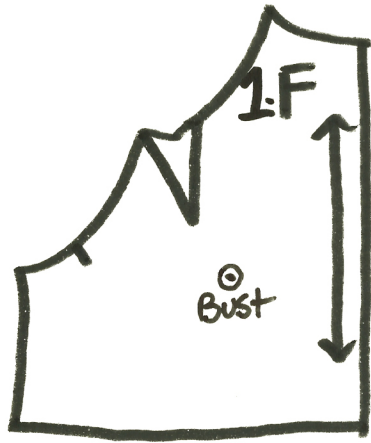


3.
F

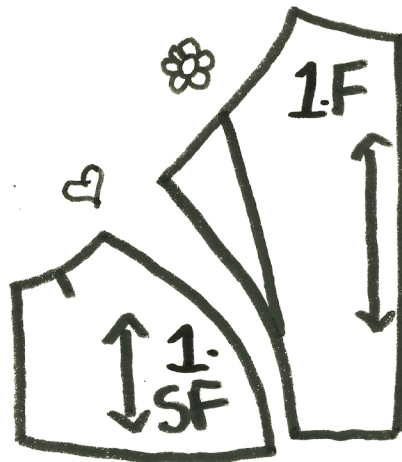
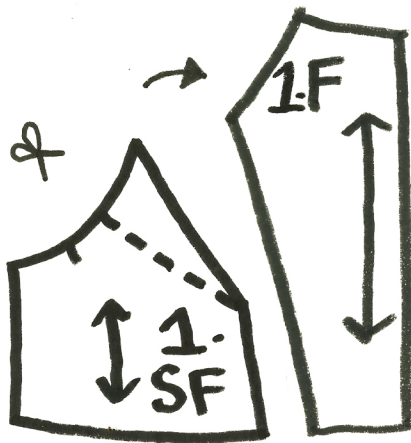
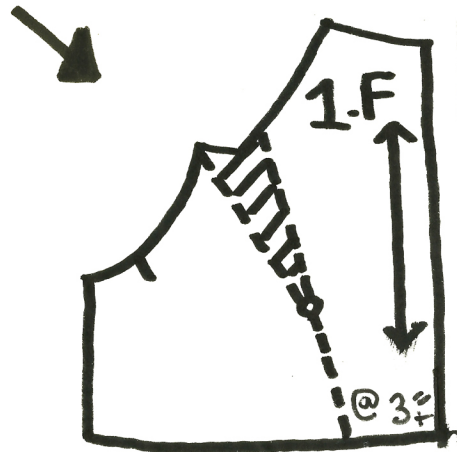


5. Pocket Facing

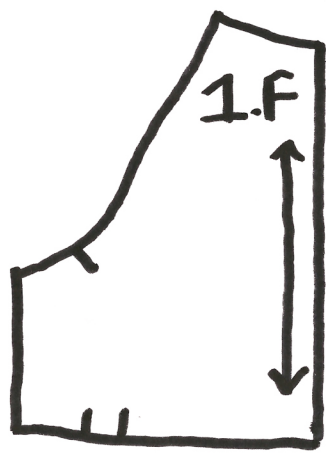




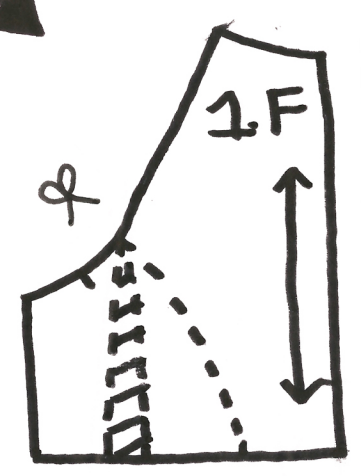
Fitted



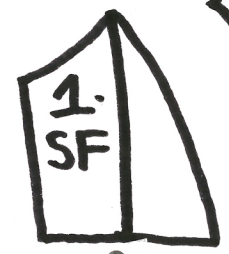
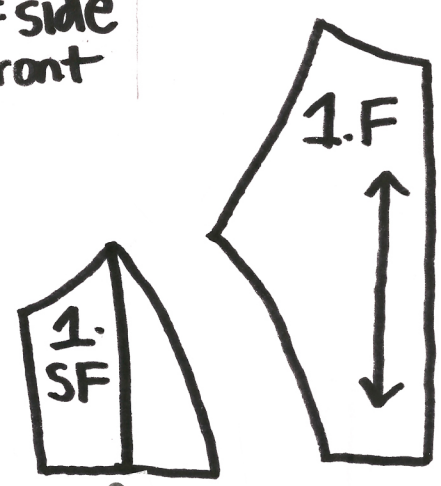
SF =
side
front

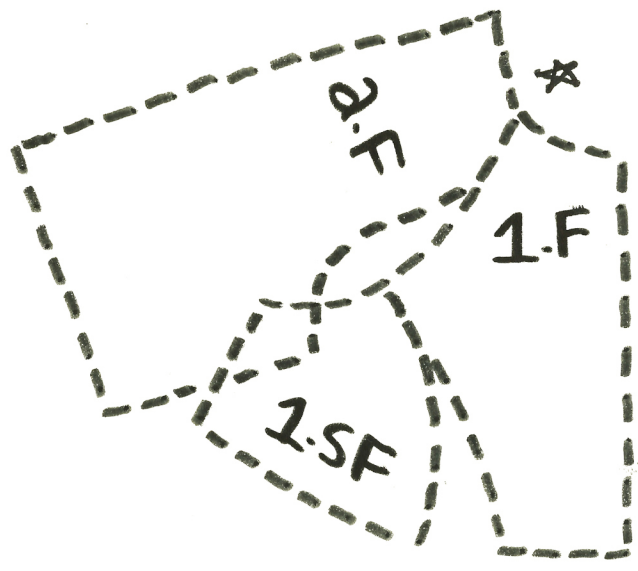


Unfitted

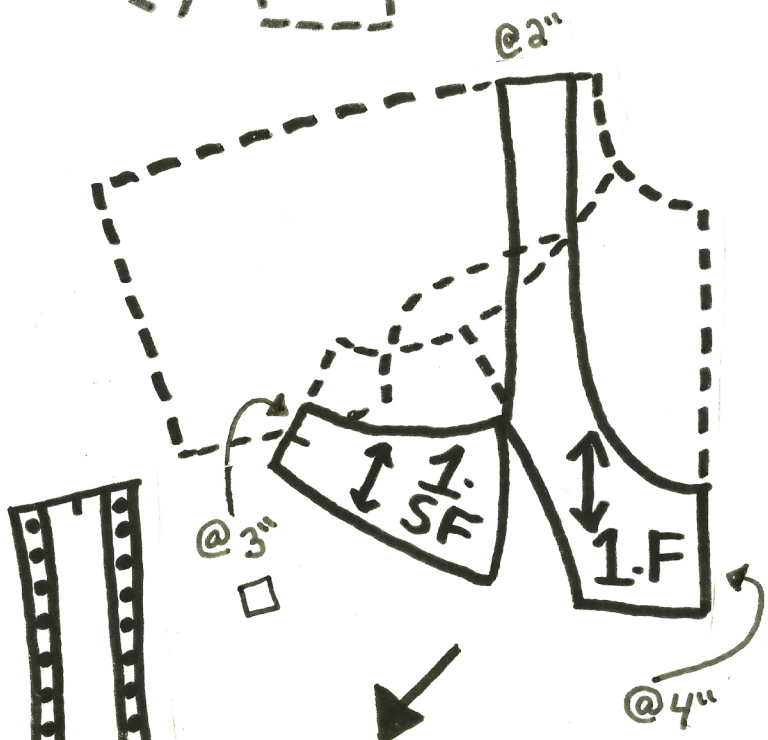


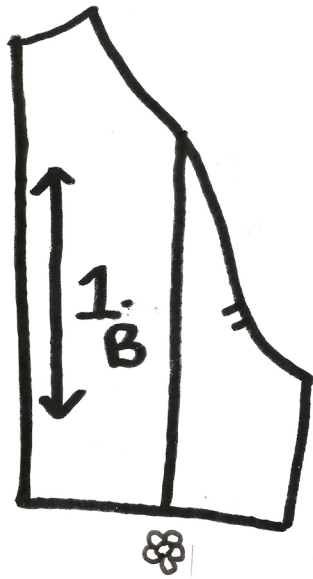
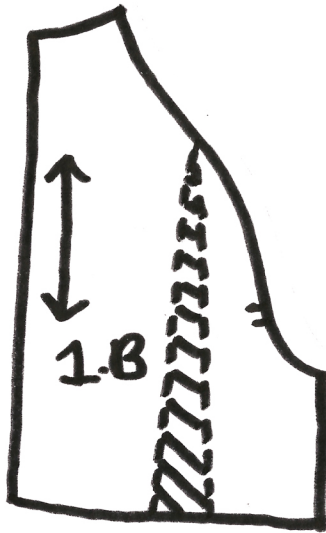
SF = side front

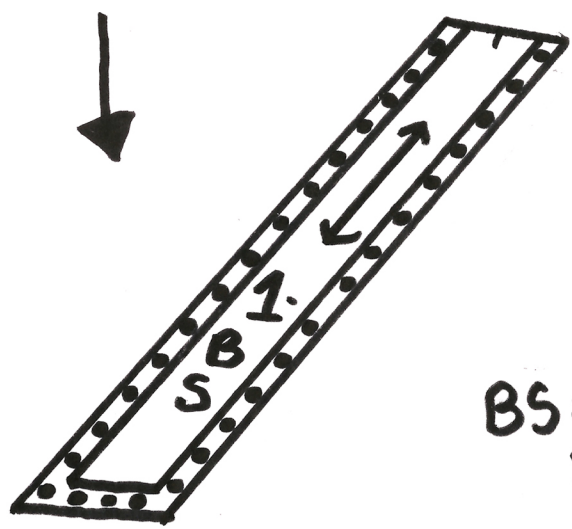
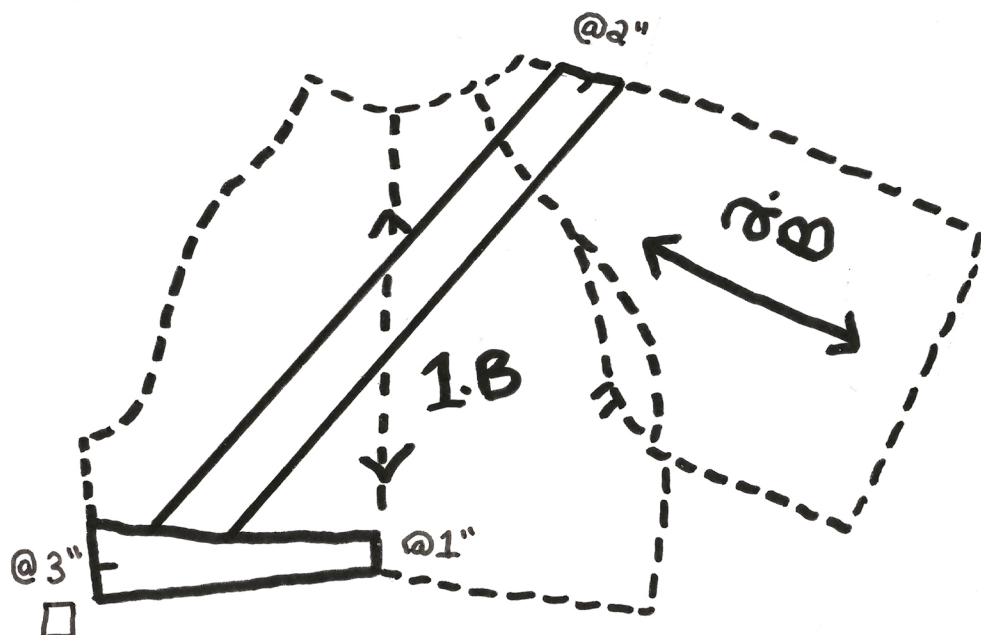




proceed
fitted or
unfitted



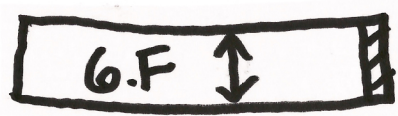




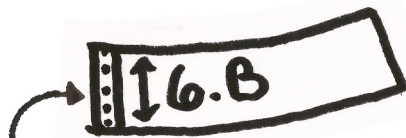
BS = Back Strap



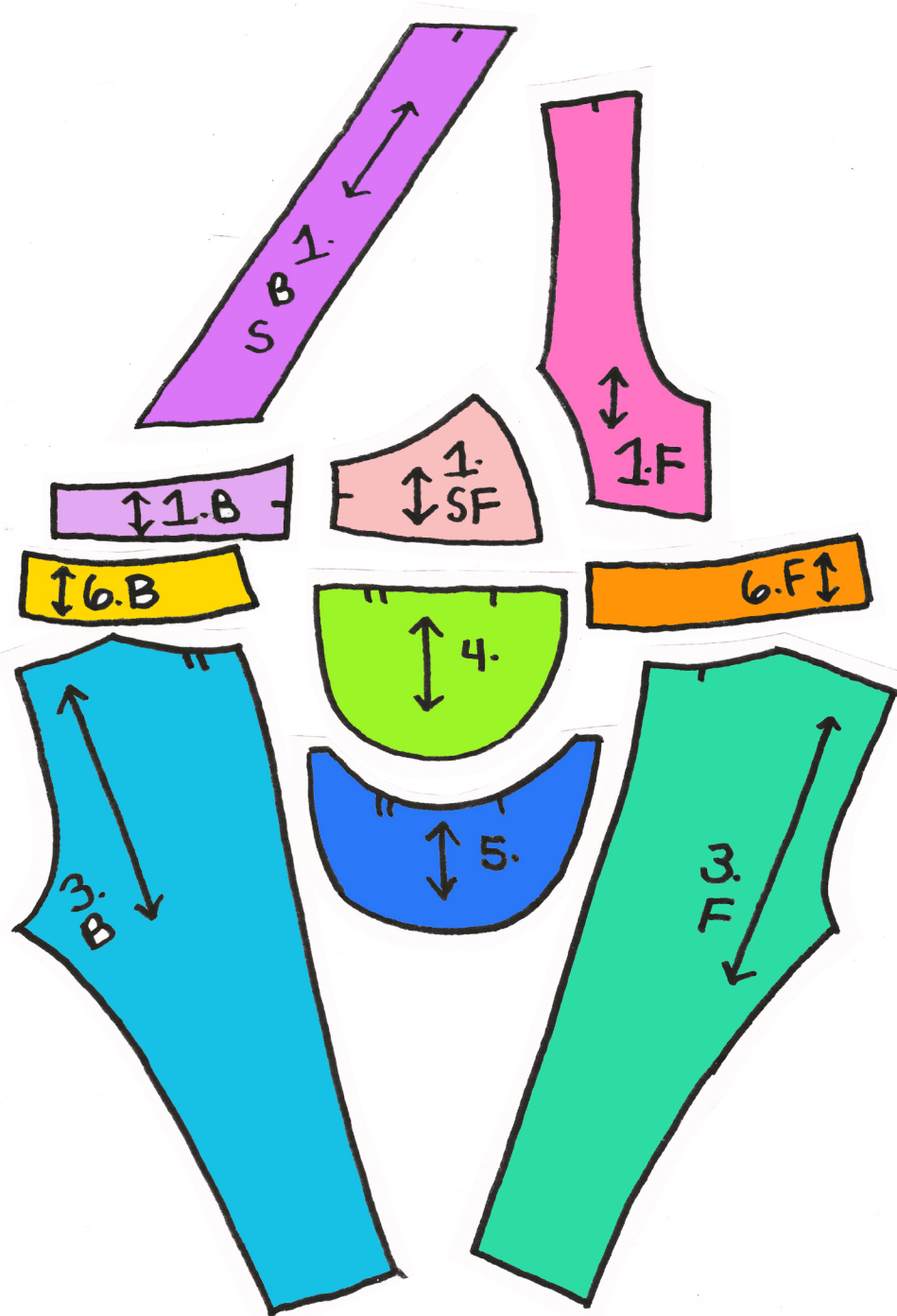
6. Waistband



center front



center back



cut 2 on fold : 1.F, 6.F
 cut 4 : 1.SF, 1.BS, 1.B, 6.B
 cut 2 : 3.F, 3.B, 4., 5.